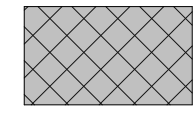
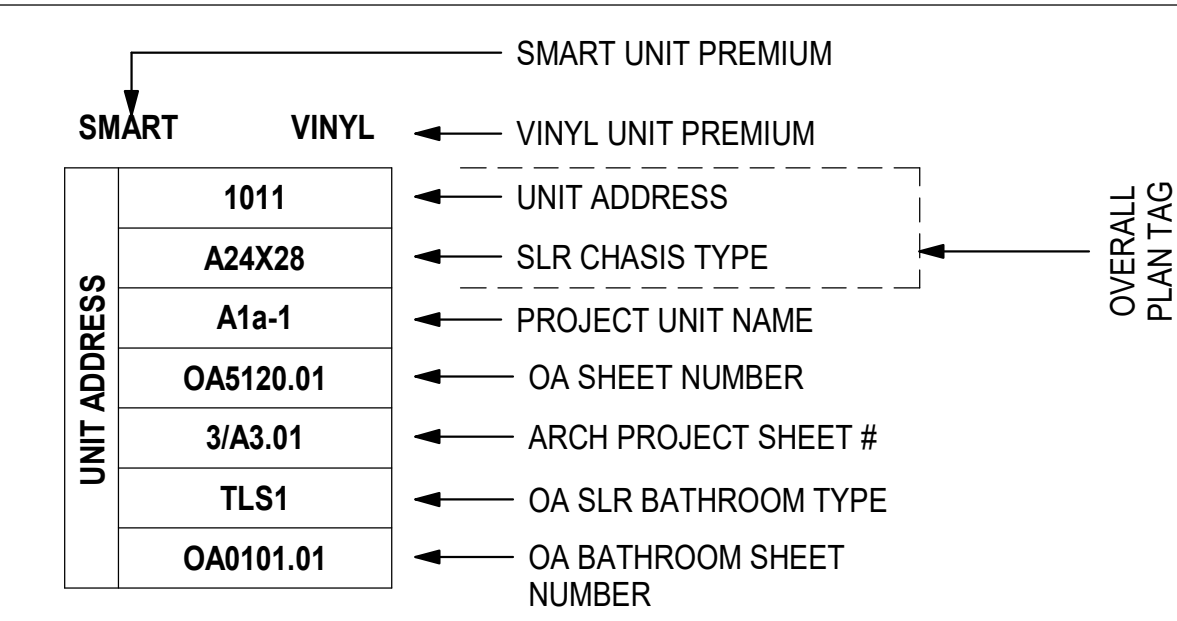


PLAN NOTES

- EXTERIOR WALLS ARE DIMENSIONED TO THE FACE OF STEEL STUD, CONCRETE OR CMU. SEE WALL SECTIONS FOR ADDITIONAL INFORMATION.
- INTERIOR PARTITIONS ARE DIMENSIONED TO THE FACE OF STEEL STUD, CONCRETE OR CMU. SEE PARTIAL PLANS FOR WALL TYPES.
- MEP CONTRACTORS SHALL SUBMIT SHOP DRAWINGS, INDICATING COORDINATED MEP UTILITIES WITH CEILING/FURR-DOWN HEIGHTS & WIDTHS TO BE APPROVED BY ARCHITECT.
- THE OWNER'S SIGN CONTRACTOR SHALL INSTALL SIGNS PER CITY REQUIRED REGULATIONS, T.A.S. & ANSI.
- INSTALL FIRE EXTINGUISHERS PER CITY REQUIREMENTS WITHIN 75 FT TRAVEL DISTANCE SPACING. MOUNT EXTINGUISHERS ON HOOKS IN SERVICE AND GARAGE AREAS AND MOUNT EXTINGUISHERS IN SEMI-FLUSH RECESSED CABINETS IN ALL OTHER AREAS. REFER TO PLANS FOR ARCHITECT'S DESIRED LOCATIONS.
- WHERE IDENTIFIED BY CENTERLINE SYMBOL, OVERALL UNIT DIMENSIONS ARE TO CENTERLINE OF AIRSPACE OF UNIT SEPARATION WALL.
- AT ALL STORAGE AND UTILITY CLOSETS TO RECEIVE VCT U.N.O. REVIEW ROOM FINISH SCHEDULE SHEET A10.101
- AT ALL WATER HEATER CLOSETS: APPLY CANT BEAD OF DYMONIC CAULK AND FABRIC REINFORCING FLASHING AT ALL FRAMED WALLS TO FLOOR. EMBED FABRIC INTO THE 810, THEN APPLY 810 AND FLOOR AND UP WALLS 6" TO ENCAPSULATE THE FABRIC MEMBRANE.
- TRAFFIC COATING AS INDICATED WITH GREY CROSS HATCH
 - A. NOT USED.
 - B. TC-02 VEHICULAR TRAFFIC COATING AT TYPE IA CONSTRUCTION
 - C. TC-03 TRAFFIC COATING (APOXY) AT SLAB ON GRADE
 - D. TC-04 ROOF TRAFFIC COATING

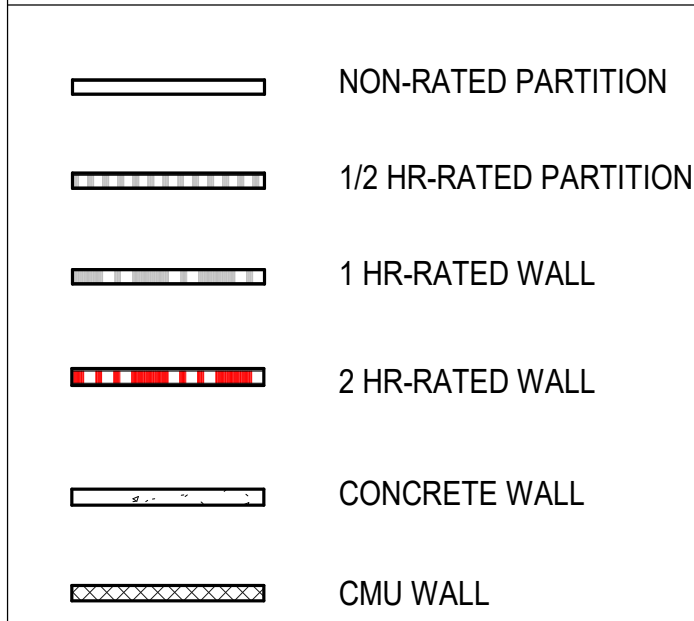


UNIT TAG LEGEND



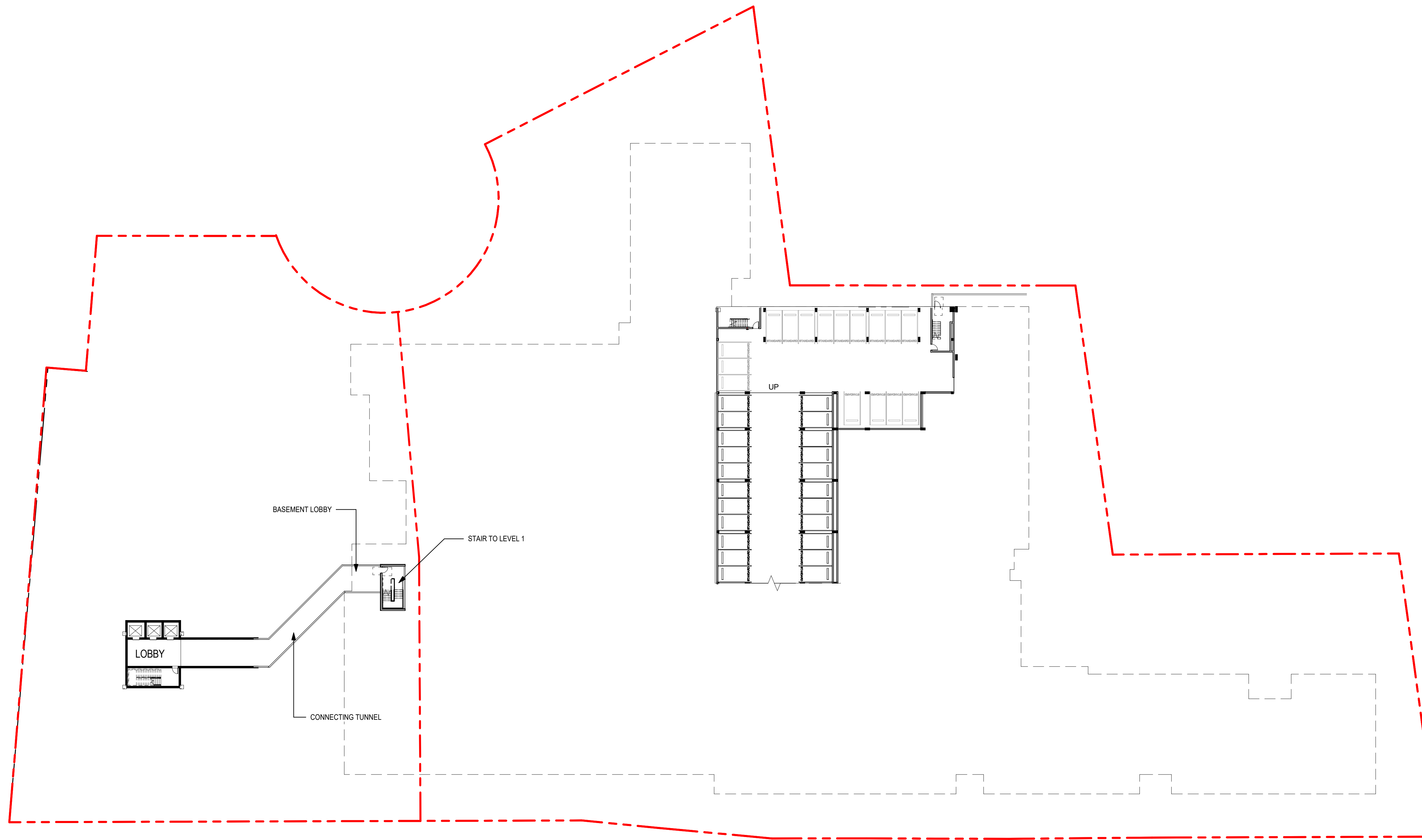
PREMIUMS ARE NOTED IN THIS BOX AS THEY OCCUR.
APPEARS UNDER THE UNIT INFORMATION TAG

PARTITION LEGEND



KEYNOTE LEGEND

KEY#	NOTE
------	------



1 OVERALL FLOOR PLAN - LEVEL B1
1" = 30'-0"

STREET LIGHTS
RESIDENTIAL

COPYRIGHT 2023
STREETLIGHTS CREATIVE STUDIO, LLC
2200 N. FIELD STREET SUITE 800
AUSTIN, TX 78704
INFO@STREETLIGHTS.COM

DESIGN CONSULTANT

AUTHORIZATION

PRELIMINARY

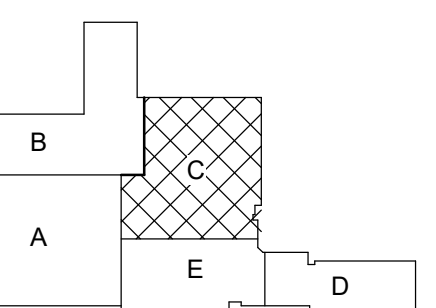
FOR INTERIM REVIEW ONLY
DRAWING IS NOT TO BE USED FOR REGULATORY APPROVAL, PERMITTING, OR FOR CONSTRUCTION.

ARCHITECT IN RESPONSIBLE CONTROL:

NAME: _____
RA #: _____

PROJECT TITLE

SOUTH LAMAR MULTIFAMILY
2700 South Lamar Blvd.
Austin, TX 78704



DRAWING ISSUES AND REVISIONS

NO.	DATE	DESCRIPTION

DRAWING NUMBER AND TITLE

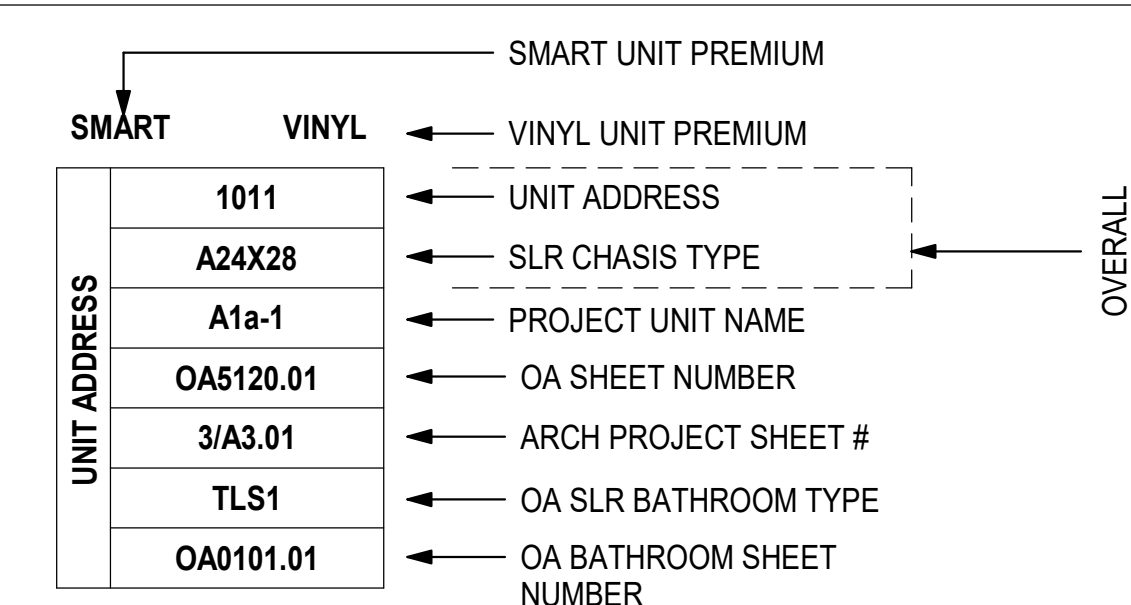
OVERALL FLOOR PLAN - LEVEL B1

A2.100

PLAN NOTES

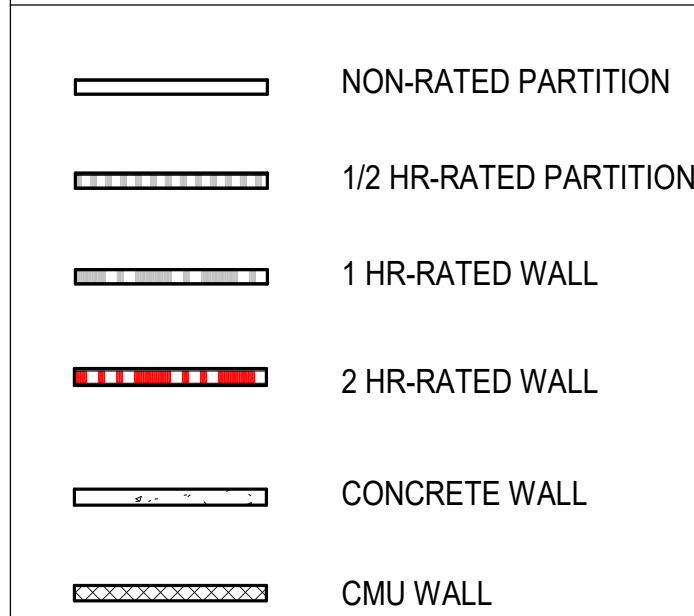
- EXTERIOR WALLS ARE DIMENSIONED TO THE FACE OF STEEL STUD, CONCRETE OR CMU. SEE WALL SECTIONS FOR ADDITIONAL INFORMATION.
- INTERIOR PARTITIONS ARE DIMENSIONED TO THE FACE OF STEEL STUD, CONCRETE OR CMU. SEE PARTIAL PLANS FOR WALL TYPES.
- MEP CONTRACTORS SHALL SUBMIT SHOP DRAWINGS, INDICATING COORDINATED MEP UTILITIES WITH CEILING/FURR-DOWN HEIGHTS & WIDTHS TO BE APPROVED BY ARCHITECT.
- THE OWNER'S SIGN CONTRACTOR SHALL INSTALL SIGNS PER CITY REQUIRED REGULATIONS, T.A.S. & ANS.I.
- INSTALL FIRE EXTINGUISHERS PER CITY REQUIREMENTS WITHIN 75 FT TRAVEL DISTANCE SPACING. MOUNT EXTINGUISHERS ON HOOKS IN SERVICE AND GARAGE AREAS AND MOUNT EXTINGUISHERS IN SEMI-FLUSH RECESSED CABINETS IN ALL OTHER AREAS. REFER TO PLANS FOR ARCHITECT'S DESIRED LOCATIONS.
- WHERE IDENTIFIED BY CENTERLINE SYMBOL, OVERALL UNIT DIMENSIONS ARE TO CENTERLINE OF AIRSPACE OF UNIT SEPARATION WALL.
- AT ALL STORAGE AND UTILITY CLOSETS TO RECEIVE VCT U.N.O. REVIEW ROOM FINISH SCHEDULE **SHEET A10.101**
- AT ALL WATER HEATER CLOSETS: APPLY CANT BEAD OF DYMOMIC CAULK AND FABRIC REINFORCING FLASHING AT ALL FRAMED WALLS TO FLOOR. EMBED FABRIC INTO THE 810, THEN APPLY 810 AND FLOOR AND UP WALLS 6" TO ENCAPSULATE THE FABRIC MEMBRANE.
- TRAFFIC COATING AS INDICATED WITH GREY CROSS HATCH
 - A. NOT USED.
 - B. TC-02 VEHICULAR TRAFFIC COATING AT TYPE IA CONSTRUCTION
 - C. TC-03 TRAFFIC COATING (APOXY) AT SLAB ON GRADE
 - D. TC-04 ROOF TRAFFIC COATING

UNIT TAG LEGEND



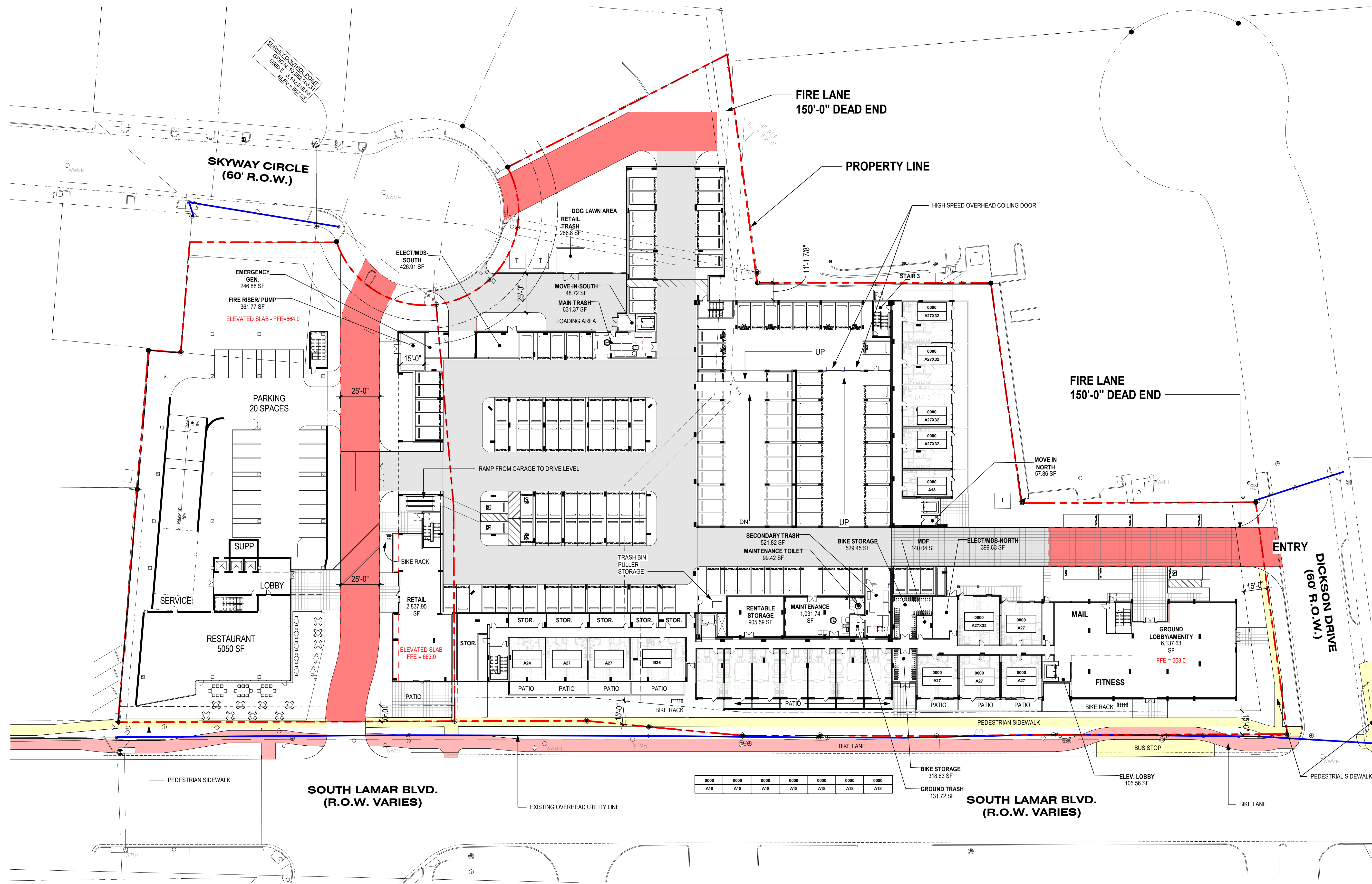
PREMIUMS ARE NOTED IN THIS BOX AS THEY OCCUR.
APPEARS UNDER THE UNIT INFORMATION TAG

PARTITION LEGEND



KEYNOTE LEGEND

KEY#	NOTE
------	------



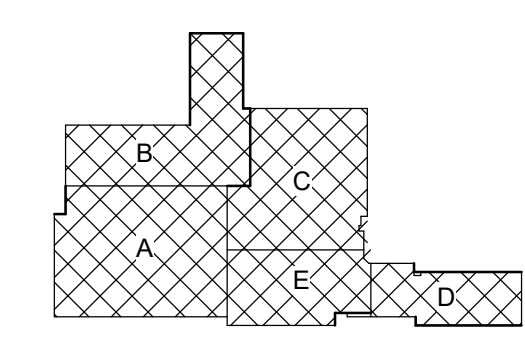
1 OVERALL FLOOR PLAN - LEVEL 1
1" = 30'-0"

STREET LIGHTS
RESIDENTIAL

COPYRIGHT 2023
STREETLIGHTS CREATIVE STUDIO, LLC
2200 N. FIELD STREET SUITE 800
AUSTIN, TX 78704
INFO@STREETLIGHTS.COM
DESIGN CONSULTANT

PRELIMINARY
FOR INTERIM REVIEW ONLY
DRAWING IS NOT TO BE USED FOR REGULATORY APPROVAL, PERMITTING, OR FOR CONSTRUCTION.
ARCHITECT IN RESPONSIBLE CONTROL:
NAME: _____
RA #: _____
PROJECT TITLE: _____

SOUTH LAMAR MULTIFAMILY
2700 South Lamar Blvd.
Austin, TX 78704



DRAWING ISSUES AND REVISIONS

NO.	DATE	DESCRIPTION

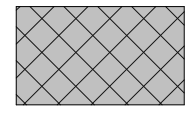
OVERALL FLOOR PLAN - LEVEL 1

A2.101

7/20/2023 5:25:26 PM

PLAN NOTES

- EXTERIOR WALLS ARE DIMENSIONED TO THE FACE OF STEEL STUD, CONCRETE OR CMU. SEE WALL SECTIONS FOR ADDITIONAL INFORMATION.
- INTERIOR PARTITIONS ARE DIMENSIONED TO THE FACE OF STEEL STUD, CONCRETE OR CMU. SEE PARTIAL PLANS FOR WALL TYPES.
- MEP CONTRACTORS SHALL SUBMIT SHOP DRAWINGS, INDICATING COORDINATED MEP UTILITIES WITH CEILING/FURR-DOWN HEIGHTS & WIDTHS TO BE APPROVED BY ARCHITECT.
- THE OWNER'S SIGN CONTRACTOR SHALL INSTALL SIGNS PER CITY REQUIRED REGULATIONS, T.A.S. & ANSI.
- INSTALL FIRE EXTINGUISHERS PER CITY REQUIREMENTS WITHIN 75 FT TRAVEL DISTANCE SPACING. MOUNT EXTINGUISHERS ON HOOKS IN SERVICE AND GARAGE AREAS AND MOUNT EXTINGUISHERS IN SEMI-FLUSH RECESSED CABINETS IN ALL OTHER AREAS. REFER TO PLANS FOR ARCHITECT'S DESIRED LOCATIONS.
- WHERE IDENTIFIED BY CENTERLINE SYMBOL, OVERALL UNIT DIMENSIONS ARE TO CENTERLINE OF AIRSPACE OF UNIT SEPARATION WALL.
- AT ALL STORAGE AND UTILITY CLOSETS TO RECEIVE VCT U.N.O. REVIEW ROOM FINISH SCHEDULE **SHEET A10.101**
- AT ALL WATER HEATER CLOSETS: APPLY CANT BEAD OF DYMOMIC CAULK AND FABRIC REINFORCING FLASHING AT ALL FRAMED WALLS TO FLOOR. EMBED FABRIC INTO THE 810, THEN APPLY 810 AND FLOOR AND UP WALLS 6" TO ENCAPSULATE THE FABRIC MEMBRANE.
- TRAFFIC COATING AS INDICATED WITH GREY CROSS HATCH
 - A. NOT USED.
 - B. TC-02 VEHICULAR TRAFFIC COATING AT TYPE IA CONSTRUCTION
 - C. TC-03 TRAFFIC COATING (APOXY) AT SLAB ON GRADE
 - D. TC-04 ROOF TRAFFIC COATING



UNIT TAG LEGEND

SMART UNIT PREMIUM

VINYL UNIT PREMIUM

1011 ← UNIT ADDRESS

A24X28 ← SLR CHASIS TYPE

A1a-1 ← PROJECT UNIT NAME

OA5120.01 ← OA SHEET NUMBER

3/A3.01 ← ARCH PROJECT SHEET #

TLS1 ← OA SLR BATHROOM TYPE

OA0101.01 ← OA BATHROOM SHEET NUMBER

OVERALL PLAN TAG

PREMIUMS ARE NOTED IN THIS BOX AS THEY OCCUR.

APPEARS UNDER THE UNIT INFORMATION TAG

PARTITION LEGEND

NON-RATED PARTITION

1/2 HR-RATED PARTITION

1 HR-RATED WALL

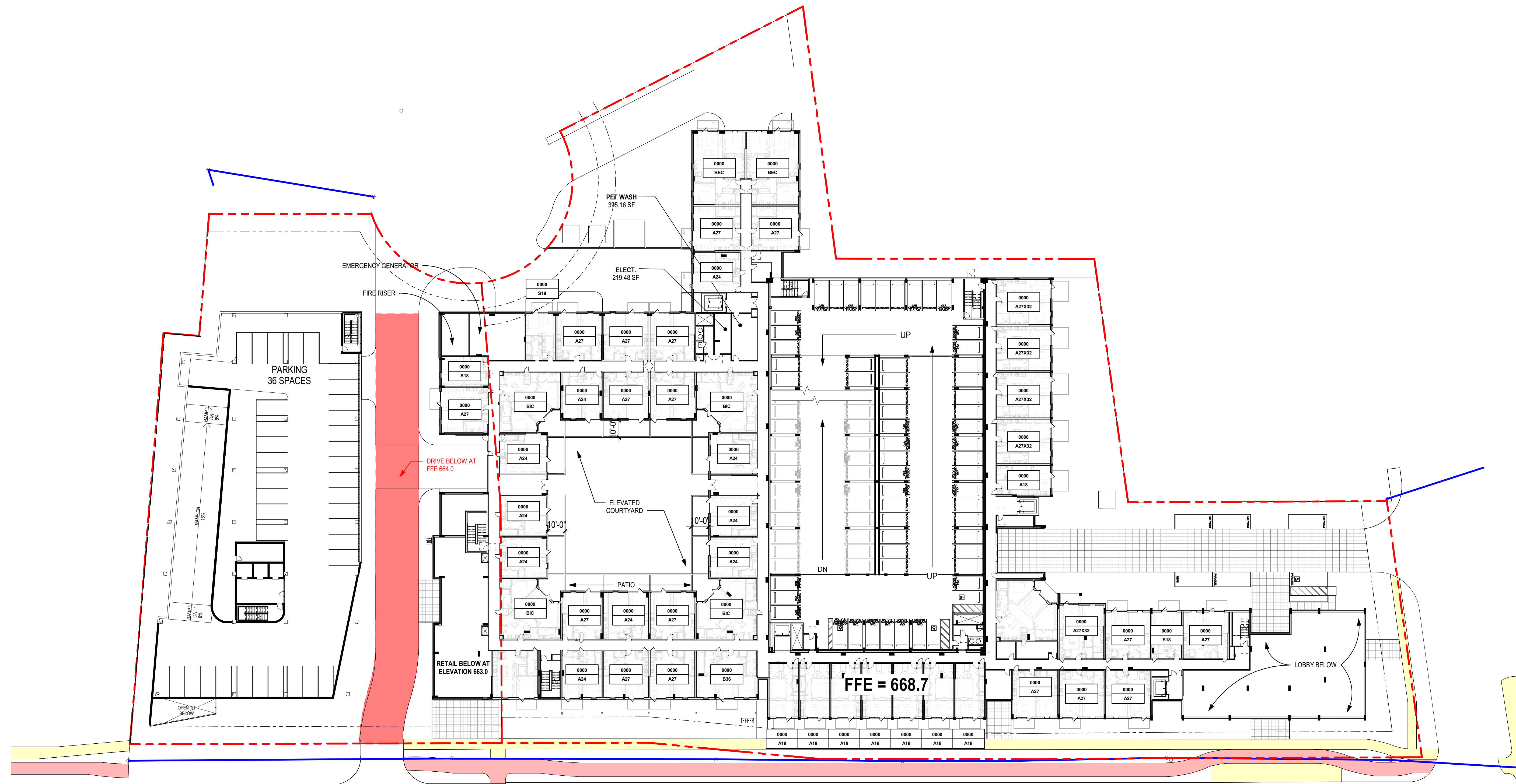
2 HR-RATED WALL

CONCRETE WALL

CMU WALL

KEYNOTE LEGEND

KEY#	NOTE
------	------



STREET LIGHTS

RESIDENTIAL

COPYRIGHT 2023
 STREETLIGHTS CREATIVE STUDIO, LLC
 2200 N. FIELD STREET SUITE 800
 AUSTIN, TX 78704
 INFO@STREETLIGHTS.COM
 DESIGN CONSULTANT

AUTHORIZATION

PRELIMINARY

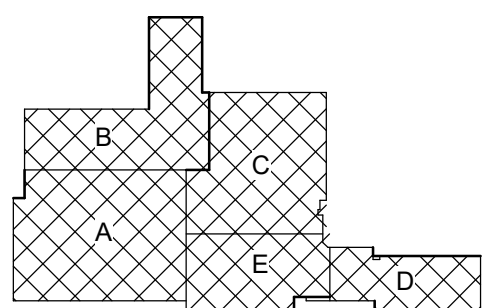
FOR INTERIM REVIEW ONLY
 DRAWING IS NOT TO BE USED FOR REGULATORY APPROVAL, PERMITTING, OR FOR CONSTRUCTION.

ARCHITECT IN RESPONSIBLE CONTROL:

NAME: _____
 RA #: _____

PROJECT TITLE

SOUTH LAMAR MULTIFAMILY
 2700 South Lamar Blvd.
 Austin, TX 78704



DRAWING ISSUES AND REVISIONS

NO.	DATE	DESCRIPTION

DRAWING NUMBER AND TITLE

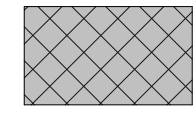
OVERALL FLOOR PLAN - LEVEL 2

A2.102

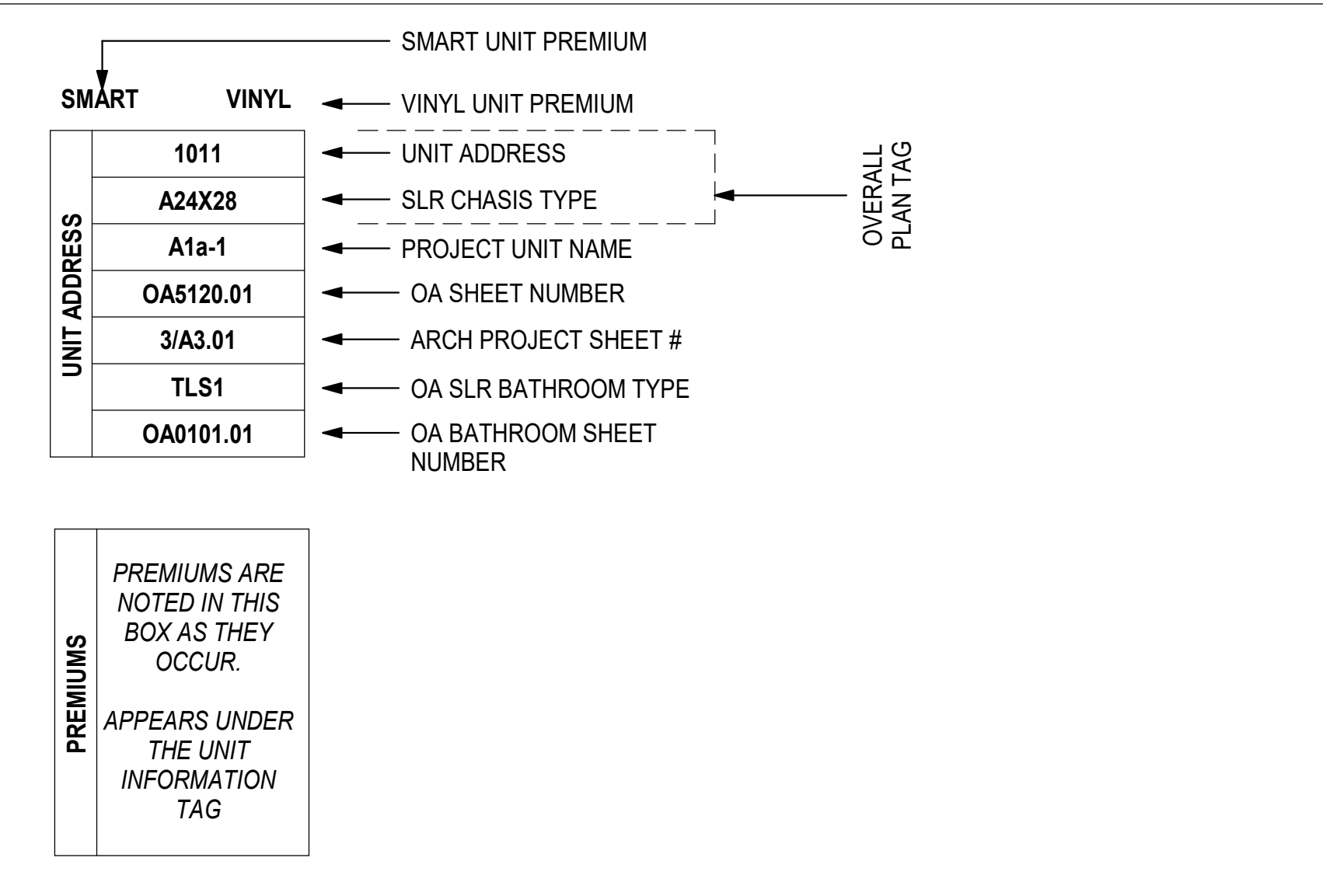
1 OVERALL FLOOR PLAN - LEVEL 2
 1" = 30'-0"

PLAN NOTES

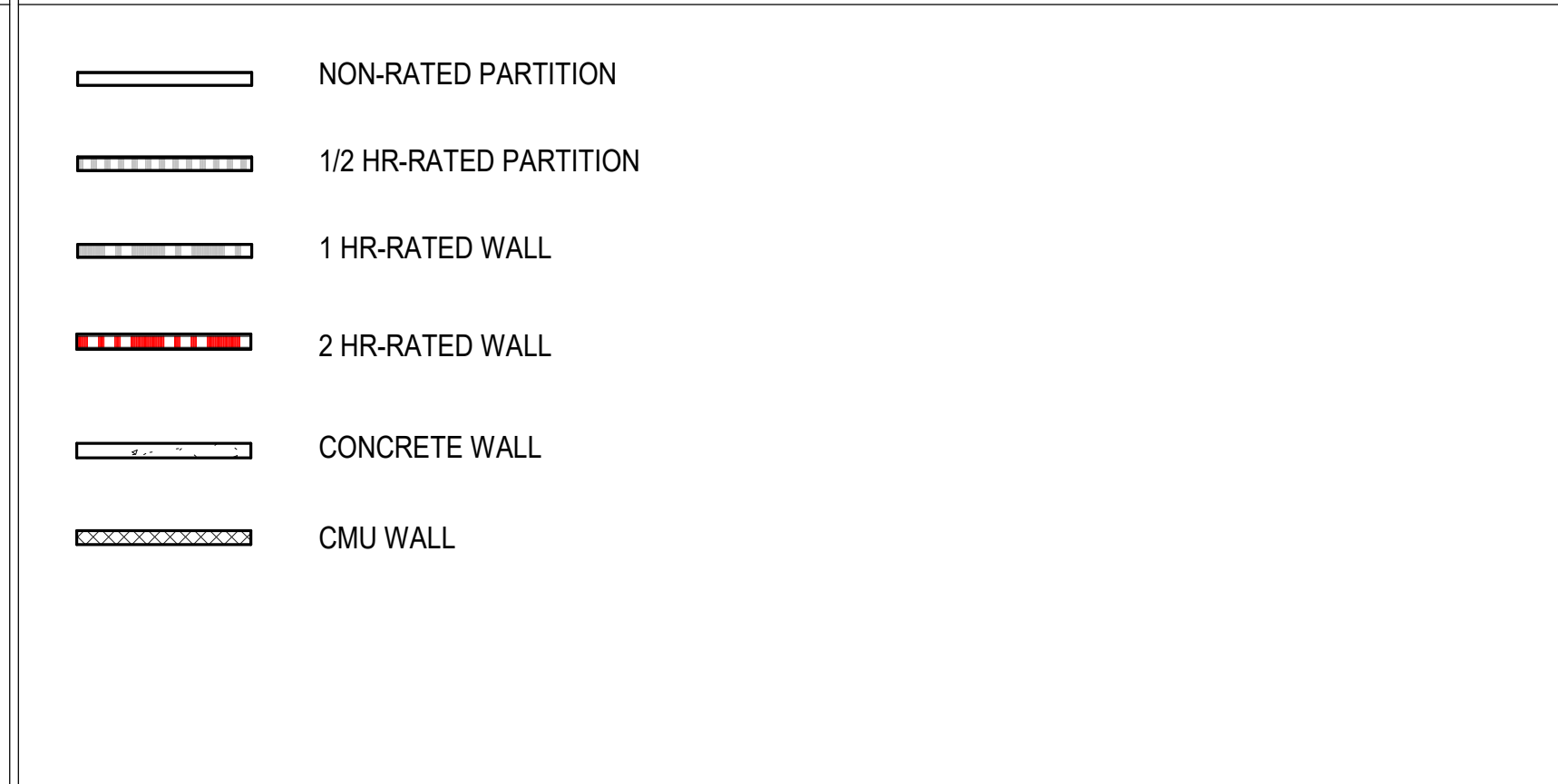
- EXTERIOR WALLS ARE DIMENSIONED TO THE FACE OF STEEL STUD, CONCRETE OR CMU. SEE WALL SECTIONS FOR ADDITIONAL INFORMATION.
- INTERIOR PARTITIONS ARE DIMENSIONED TO THE FACE OF STEEL STUD, CONCRETE OR CMU. SEE PARTIAL PLANS FOR WALL TYPES.
- MEP CONTRACTORS SHALL SUBMIT SHOP DRAWINGS, INDICATING COORDINATED MEP UTILITIES WITH CEILING/FURR-DOWN HEIGHTS & WIDTHS TO BE APPROVED BY ARCHITECT.
- THE OWNER'S SIGN CONTRACTOR SHALL INSTALL SIGNS PER CITY REQUIRED REGULATIONS, T.A.S. & ANS.I.
- INSTALL FIRE EXTINGUISHERS PER CITY REQUIREMENTS WITHIN 75 FT TRAVEL DISTANCE SPACING. MOUNT EXTINGUISHERS ON HOOKS IN SERVICE AND GARAGE AREAS AND MOUNT EXTINGUISHERS IN SEMI-FLUSH RECESSED CABINETS IN ALL OTHER AREAS. REFER TO PLANS FOR ARCHITECT'S DESIRED LOCATIONS.
- WHERE IDENTIFIED BY CENTERLINE SYMBOL, OVERALL UNIT DIMENSIONS ARE TO CENTERLINE OF AIRSPACE OF UNIT SEPARATION WALL.
- AT ALL STORAGE AND UTILITY CLOSETS TO RECEIVE VCT U.N.O. REVIEW ROOM FINISH SCHEDULE **SHEET A10.101**
- AT ALL WATER HEATER CLOSETS: APPLY CANT BEAD OF DYMONIC CAULK AND FABRIC REINFORCING FLASHING AT ALL FRAMED WALLS TO FLOOR. EMBED FABRIC INTO THE 810, THEN APPLY 810 AND FLOOR AND UP WALLS 6" TO ENCAPSULATE THE FABRIC MEMBRANE.
- TRAFFIC COATING AS INDICATED WITH GREY CROSS HATCH
 - A. NOT USED.
 - B. TC-02 VEHICULAR TRAFFIC COATING AT TYPE IA CONSTRUCTION
 - C. TC-03 TRAFFIC COATING (APOXY) AT SLAB ON GRADE
 - D. TC-04 ROOF TRAFFIC COATING



UNIT TAG LEGEND

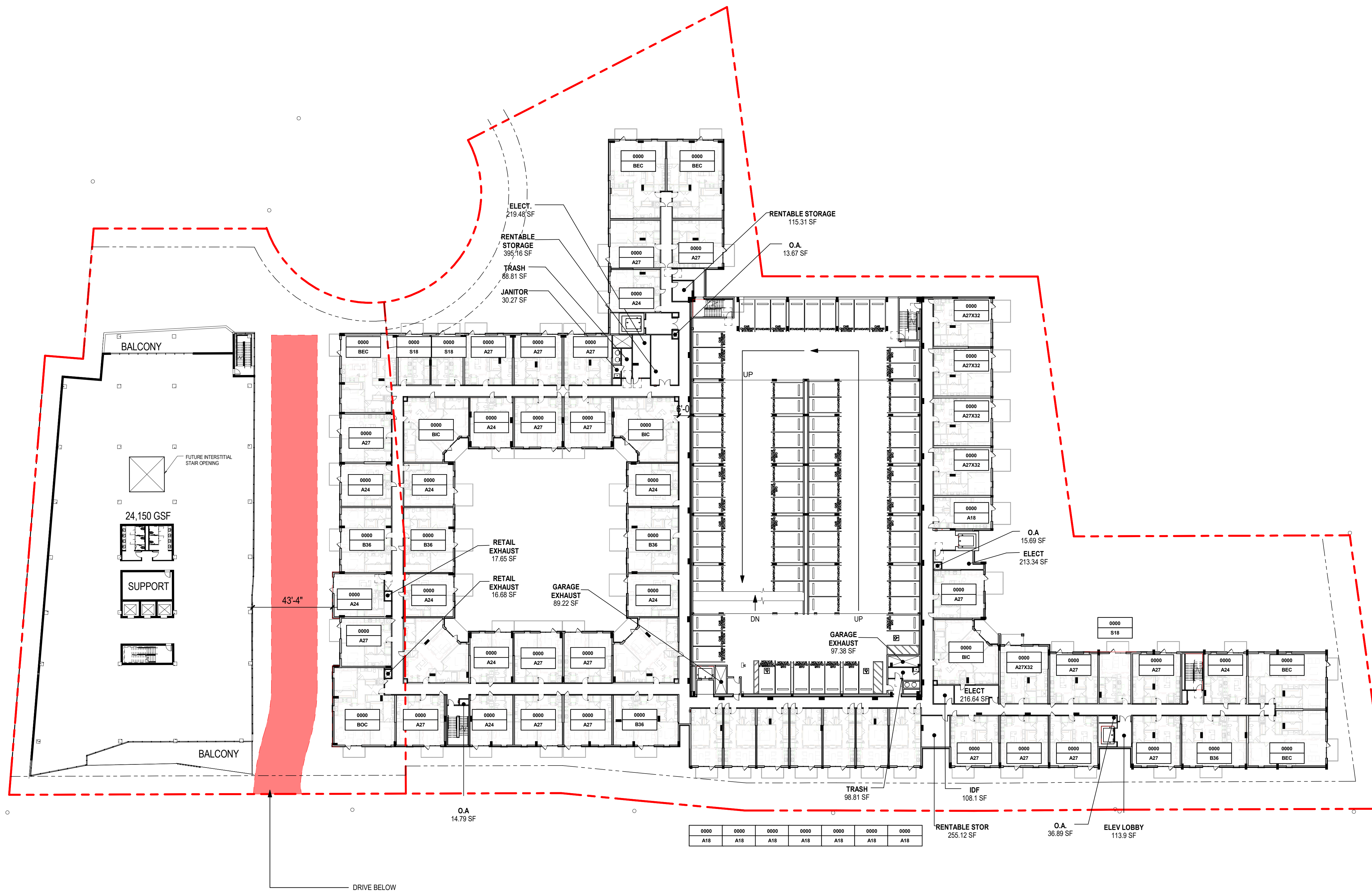


PARTITION LEGEND



KEYNOTE LEGEND

KEY#	NOTE
------	------



1 OVERALL FLOOR PLAN - LEVEL 4, 5, 6
1" = 30'-0"

STREET LIGHTS
RESIDENTIAL

DESIGN CONSULTANT

2700 N. FIELD STREET SUITE 800
AUSTIN, TX 78704
INFO@STREETLIGHTS.COM

PRELIMINARY
FOR INTERIM REVIEW ONLY

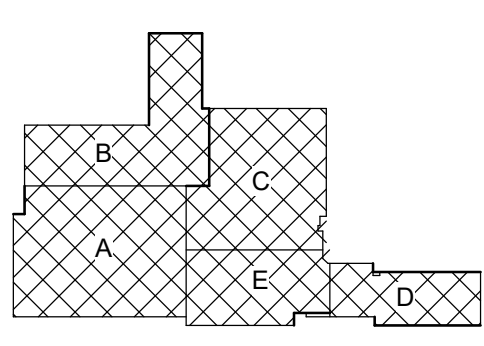
DRAWING IS NOT TO BE USED FOR REGULATORY APPROVAL, PERMITTING, OR FOR CONSTRUCTION.

ARCHITECT IN RESPONSIBLE CONTROL:

NAME: _____
RA #: _____

PROJECT TITLE

SOUTH LAMAR MULTIFAMILY
2700 South Lamar Blvd.
Austin, TX 78704



DRAWING ISSUES AND REVISIONS

NO.	DATE	DESCRIPTION

DRAWING NUMBER AND TITLE
OVERALL FLOOR PLAN - LEVEL 4, 5, 6

A2.104

7/19/2023 12:51:43 PM